



Development of Approaches to Harmonization of a Comprehensive
Internationalization Strategies
in Higher Education, Research and Innovation at EU and Partner Countries
HARMONY



Rethinking Degrees in a Global Perspective



Rethinking Degrees in a Global Perspective





4

CIDADES
CITIES

LEIRIA

CALDAS DA RAINHA

PENICHE

MARINHA GRANDE



5

ESCOLAS
SCHOOLS

ESCOLA SUPERIOR DE EDUCAÇÃO E CIÊNCIAS SOCIAIS

SCHOOL OF EDUCATION AND SOCIAL SCIENCES

www.esecs.ipleiria.pt

ESCOLA SUPERIOR DE TECNOLOGIA E GESTÃO

SCHOOL OF TECHNOLOGY AND MANAGEMENT

www.estg.ipleiria.pt

ESCOLA SUPERIOR DE ARTES E DESIGN

SCHOOL OF ARTS AND DESIGN

www.esad.ipleiria.pt

ESCOLA SUPERIOR DE TURISMO E TECNOLOGIA DO MAR

SCHOOL OF TOURISM AND MARITIME TECHNOLOGY

www.estm.ipleiria.pt

ESCOLA SUPERIOR DE SAÚDE

SCHOOL OF HEALTH SCIENCES

www.esslei.ipleiria.pt

Politécnico de Leiria **Polytechnic of Leiria**

11.500

Estudantes
Students

1.200

Professores e Técnicos
Teachers and Staff

49

Licenciaturas

Undergraduate Programmes

72

Mestrados e Pós-Graduações
Postgraduate Programmes

36

TeSP
TeSP



900
PROFESSORES
TEACHERS



\cong **60%**
DOUTORADOS
WITH PHD



**EDUCAÇÃO
E CIÊNCIAS SOCIAIS**
EDUCATION AND SOCIAL
SCIENCES



**ENGENHARIA
E TECNOLOGIA**
ENGINEERING
AND TECHNOLOGY



**ARTES
E DESIGN**
ARTS
AND DESIGN



**CIÊNCIAS
EMPRESARIAIS
E JURÍDICAS**
BUSINESS AND
LEGAL SCIENCES

\cong **60%**
PhD



**SAÚDE
E DESPORTO**
HEALTH
AND SPORT



TURISMO
TOURISM



**CIÊNCIA E
TECNOLOGIA DO MAR**
MARINE SCIENCE
AND TECHNOLOGY

+ 2500

estágios em empresas e instituições
Internships in institutions and companies

Campus Global Global Campus

+1.000

Estudantes Internacionais
International Students

+250

Em Mobilidade Internacional
On International Mobility

+60

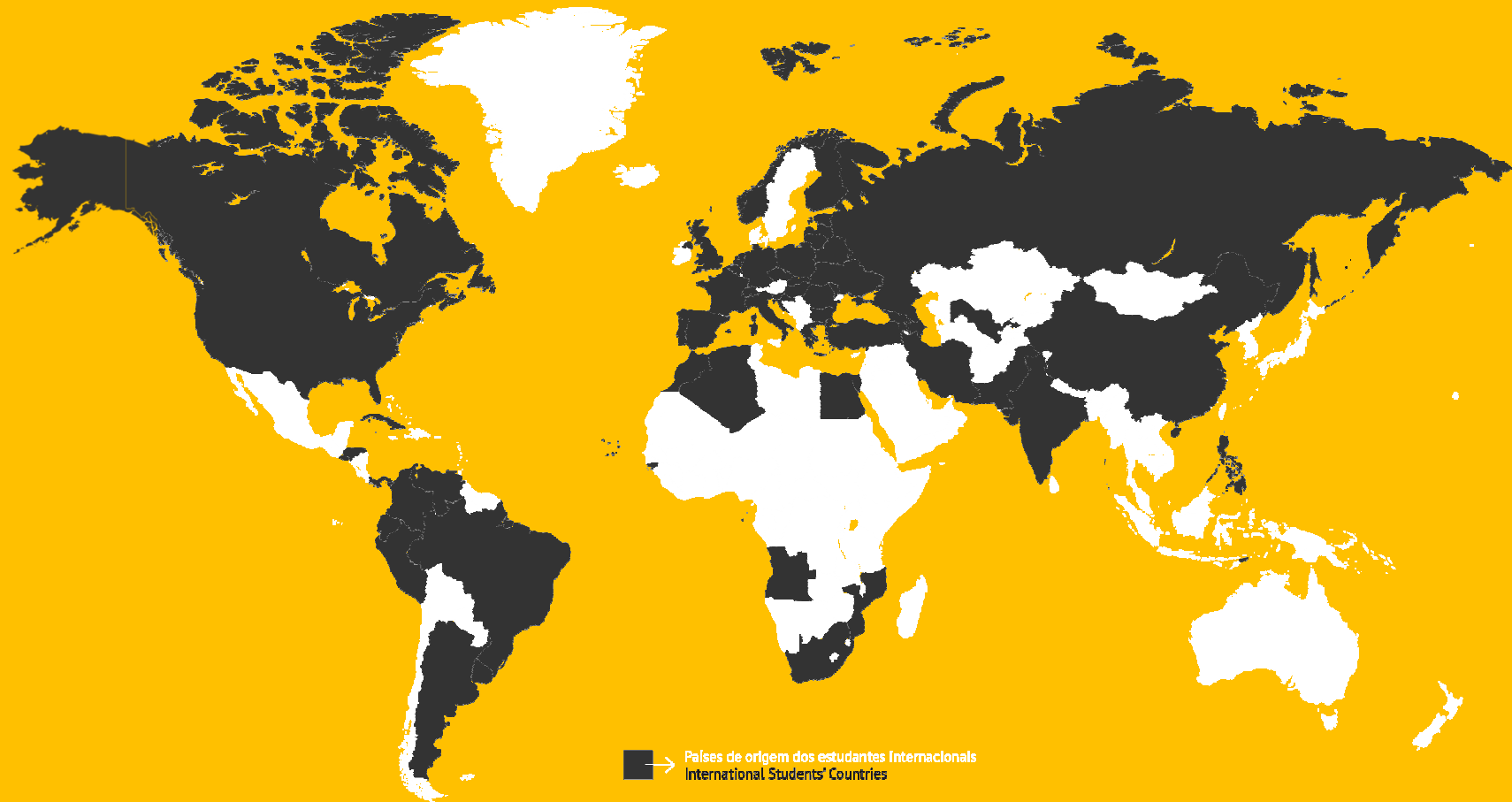
Nacionalidades
Different Nationalities

9

Mestrados lecionados em inglês
Masters taught in english

+350

Protocolos Internacionais
International Cooperation
Agreements



The opportunity

1-European Neighbourhood Policy (ENP)

2-Unprecedented increase in the internationalization of higher education in general

3-Erasmus Mundus – Project INFINITY (enhanced the Mobility with Eastern Countries)



4-TEMPO- Project - RETHINKe- Reform of Education THruINternational Knowledge Exchange
(Education for sustainable Development and Modernization of Higher Education)





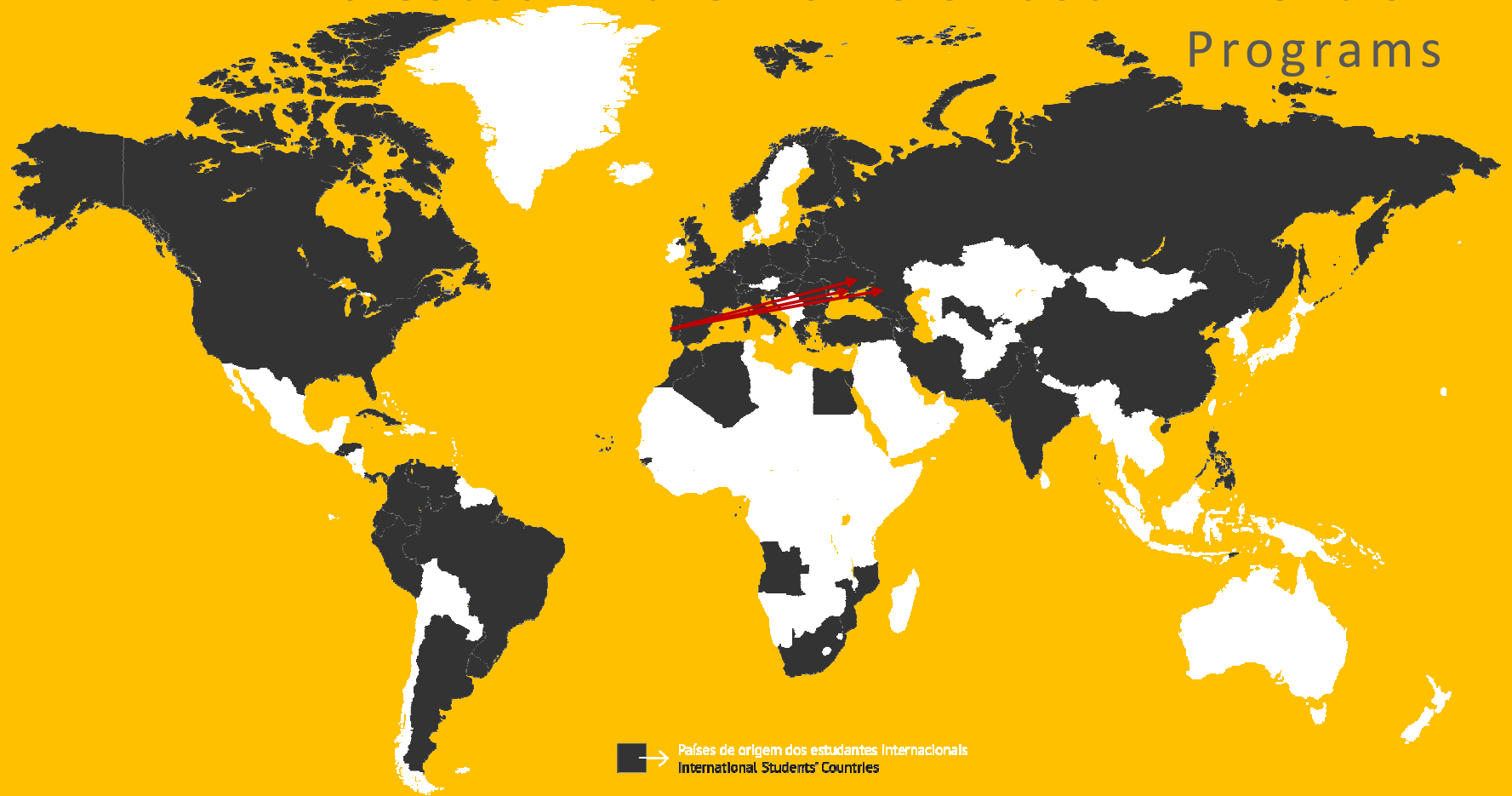
The Partners

Armenia
Azerbaijan
Belarus
Georgia
Moldova
Ukraine

Identifying
appropriate
partner is the
most important
step! Building up
from existing
partnership is
safer

commitment
Important!

The networking resulting from the partnerships
created in the frame of both 2 mention
Programs





- Countries are reviewing their national internationalization strategies and programs;
- Dual degrees lead to a deeper, more sustainable relationship, true academic benefits, curriculum innovation;
- Dual degrees achieve something unique that couldn't be achieved otherwise - lesser bureaucracy, legal barriers and challenges than a joint-degree.



Academic Program

- Certificate at least B1 English level ;
- The Academic records (GPA) calculated according to <http://www.foreigncredits.com/Resources/GPA-Calculator>;
- CV in English and motivation letter from the student;
- Document signed by the rector with procedures implemented in the partner university referring the link of the web page where they have launched the call for IPLEIRIA application;

WHY SHOULD I CHOOSE TO STUDY THIS DOUBLE MASTER DEGREE?

The Double Master Degree in Civil Engineering, offered jointly by the Polytechnic Institute of Leiria (IPLeiria) in Portugal and Polotsk State University (PSU) in Belarus, gives students the appropriate skills necessary to improve their opportunities to develop a professional career in the construction industry and gain an awareness of the context in which engineering operates, in terms of design, construction and the environment.

Double Degrees are the ultimate level of cooperation among higher education institutions within the global education scenario and this Master offers you training according to the highest European academic standards, together with the most international and intercultural tools needed for success and higher rates of employability on the globalised labour market. It has the advantages of being versatile, flexible and to improve opportunities in careers and networking.

WHAT WILL I GET AFTER FINISHING MY STUDIES?

You will get two official Master diplomas issued by two European prestigious institutions:

>**Master degree in Civil Engineering – Building Construction** by Polytechnic Institute of Leiria (IPLeiria), Portugal, which has been accredited by European Accreditation of Engineering Programmes EUR-ACE. The EUR-ACE® label facilitates graduate mobility as promoted by the EU Directive on Recognition of Professional Qualification;

>**Master degree in Civil Engineering** by Polotsk State University (PSU), Belarus.

This program will provide you with technical and scientific skills of a civil construction engineer, developing advanced knowledge of civil engineering and associated engineering and scientific disciplines (structure dynamics, sustainable building design, transportation, geotechnics, water supply and drainage, environmental, planning and construction). In this degree, students will develop original work in a specific field, through a project, a dissertation or an internship.

Assurance that the EUR-ACE®labelled programme meets high European and international standards and is recognised by employers in Europe.



WHAT DO I NEED TO ENROL?

The Double Master Degree in Civil Engineering is designed for students and professionals with scientific backgrounds in the field of Civil Engineering or other related technological areas.

The basic prerequisite is to hold an undergraduate Degree from a European Higher Education Area (EHEA) university or equivalent from a non-EHEA university with access to Master Degrees in their own academic systems.

Students must have an approved English qualification at level B1 or above to enrol.

**MASTER DEGREE IN CIVIL ENGINEERING
BUILDING CONSTRUCTION**

**+
MASTER DEGREE IN CIVIL ENGINEERING**

**SEPTEMBER – JULY
4 SEMESTERS
120 ECTS**

STUDY PROGRAMME

Students from IPLeiria

Semester	Curricular unit
1 (IPLeiria) 30 ECTS	Dynamic Analysis and Earthquake Engineering Construction and Maintenance of Road Pavements Urban Hydraulics Coatings and finishes Sustainable Construction
2 (IPLeiria) 30 ECTS	Safety and Quality in Construction and Projects Wood and Masonry Structures Modelling and Evaluation of Structures Environmental Comfort in Buildings Mobility Planning and Management Introduction to Research in Civil Engineering
3 (PSU) 18 ECTS	Elective 1 Structure and solidification of soil Reinforced constructions/prefabricated constructions Innovation Management
3 and 4 (IPLeiria)* 42 ECTS	Elective Subject 2

*Co-supervision by PSU Professor

Elective subjects 1

One of the following subjects

Pathology and Rehabilitation of Buildings (6 ECTS)
Mobility Planning and Management (6 ECTS)

Elective subjects 2

One of the following subjects

Project (42 ECTS)
Dissertation (42 ECTS)
Internship (42 ECTS)

Students from PSU

Semester	Curricular unit
1 (PSU) 30 ECTS	Technologies and methods of designing and building objects Philosophy and Methodology of Science Foreign Language Basics of IT Educational Science and Psychology Calculations for constructions with software Modelling of the experiment Processing data for statistics
2 (PSU) 30 ECTS	Constructions and methods of their calculations Philosophy and Methodology of Science Foreign Language Statistical methods of planning and processing of experimental data Energy- and resource-saving types of constructions
3 (IPLeiria) 30 ECTS	Pathology and Rehabilitation of Buildings Pre-stressed Structures and Prefabrication Support Structures and Improvement of Soil Elective Subject 1
4 (PSU)* 30 ECTS	Dissertation

*Co-supervision by IPLeiria Professor

Elective subjects 1

The students should pick 12 ECTS

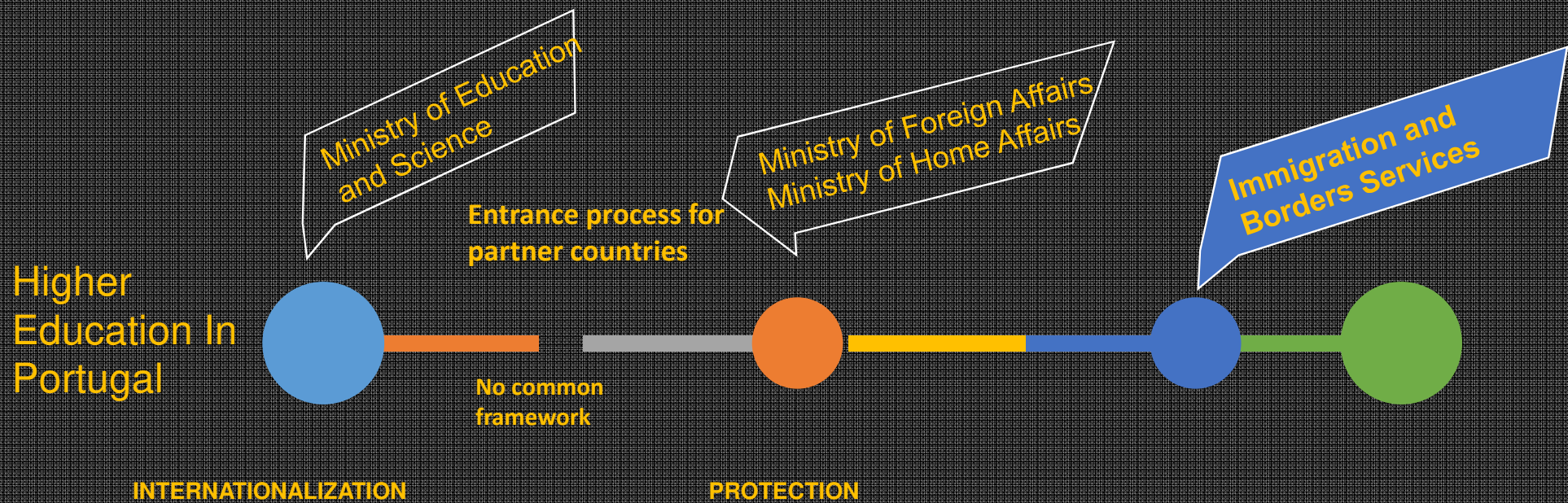
Dynamic Analysis and Earthquake Engineering (7 ECTS)
Sustainable Construction (5 ECTS)
Coatings and finishes (6 ECTS)
Urban Hydraulics (6 ECTS)



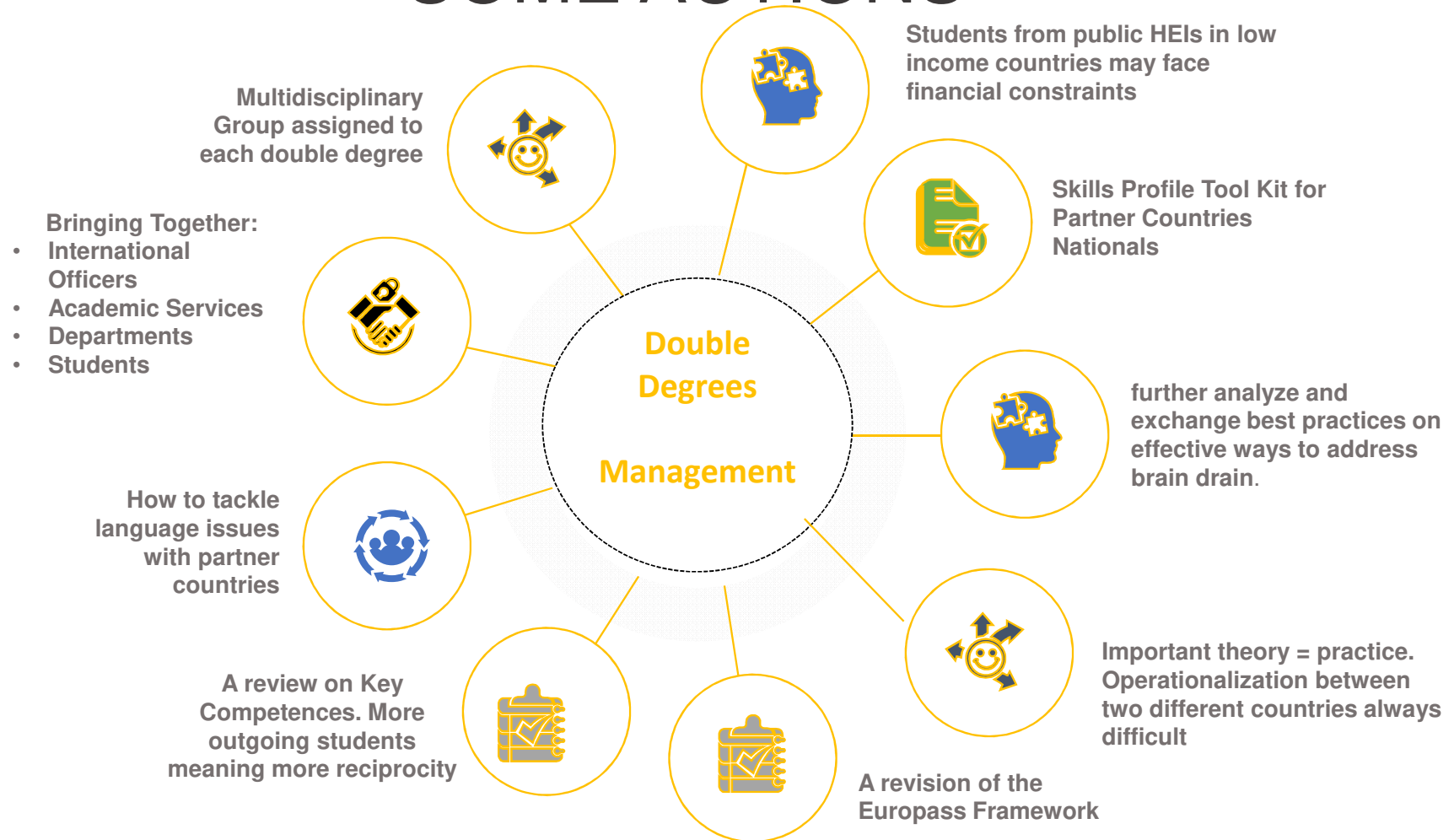
The confusion.

- 1) examine the different meanings of double and joint degree programs around the world and the driving rationales;
- 2) identify core concepts and elements;
- 3) propose a working definition and typology that will provide some clarity on the meaning of key issues involved in international **joint, double, multiple and combined degree programmes.**

MORE BRIDGES TO CROSS DIFFERENT GOALS AT MINISTRY LEVEL



SOME ACTIONS



Pros

- The Internationalization of HEIs;
- Multilateral university networks ;
- Increase in volume, scope and scale of crossborder movement of education programmes;
- The overall demand for higher education is growing and this impacts the quest for foreign education credentials;
- A unique experience for students to have a new cultural and academic experience

Cons

- The Language of instruction. Most of the countries involved have russian as a 2nd language;
- Quality assurance – institutions have different internal quality assurance-can you quality assure pogrammes of other HEIs?
- Accreditation - the establishment of procedures for accrediting international collaborative programs is relatively new territory for many agencies;
- Complicated National Policies;
- 'Legitimacy' of the qualifications – problems in certification, qualifications recognition



Expand International activities and
deepen the engagement with partners
abroad



The overall demand for higher education is growing and this impacts the interest in international education opportunities and especially the quest for foreign education credentials

Quality Innovation



Very appealing to students to get two
diplomas from different Universities

Increases the networking, research, and
modernization curricula of both
institutions involved



**Added
Value**



www.ipleiria.pt/home

Thank you. Any questions?